



Sani-Tube™ and Sani-Lever™

Floor and Wall Mounted Tube Rail



Life Science Products

124 Speer Road, Chestertown, MD 21620
www.lspinc.com | 800-638-9874 | info@lspinc.com

© 2023 Life Science Products, Inc.

*Custom Fabricated
Tube & Cantilever Rail
Systems
for Floors and Walls.
Wall Protection and Hand Rails
for
Pharma, Healthcare, and
Bio-Medical Clean Room
Applications*



Sani-Tube™ & Sani-Lever™

- Custom Fabricated for Individual Facility Specifications
- 1.5" and 2" Standard O.D.
- 304 & 316L Stainless Steel
- #4 Polish Finish
- Floor & Wall Mounts are customizable for height, width, and mounting base.
- Returns are capped with welded ends
- Samples and Detail Drawings available upon request
- Made in the U.S.A.

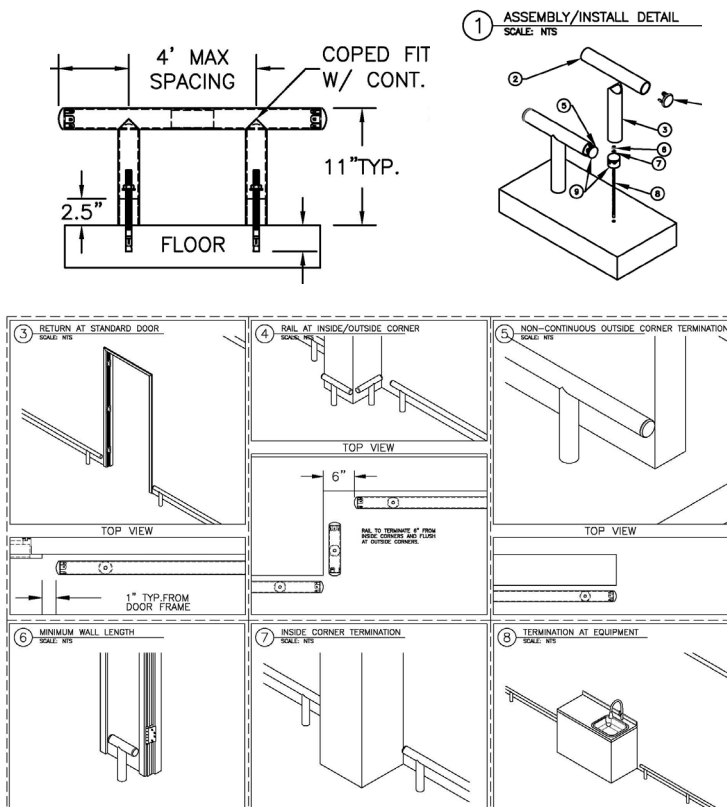
Sani-Tube™ General Description:

Wall protection from carts, assisted mobility vehicles, cleaning equipment and mechanized traffic is essential in Clean Rooms, Healthcare Critical Spaces, and Bio-Medical Research Facilities. All require specific types of wall protection and handrails. LSP offers customizable and standard systems of both stainless steel tube and cantilevered rail. Both floor and wall mount.

Sani-Tube™ is generally a 2" O.D., 11 gauge wall thickness Stainless Steel Tube. Both 304 and 316L Stainless with a #4 polish are available. The Tubing is provided in 12' maximum lengths.

Sani-Tube™ is mounted vertically in the floor to protect walls from both wheeled and walking traffic. An 11" height is most standard for the 2" O.D. stainless vertical risers, but mounting heights from 3" on up are optional, as is a 1.5" O.D. stainless vertical riser. Floor mount brackets can either be integrated into the floor or attached with concrete anchors and fasteners. **Sani-Tube™** floor brackets should be spaced a maximum of 48" apart.

Sani-Tube™ Sample Details

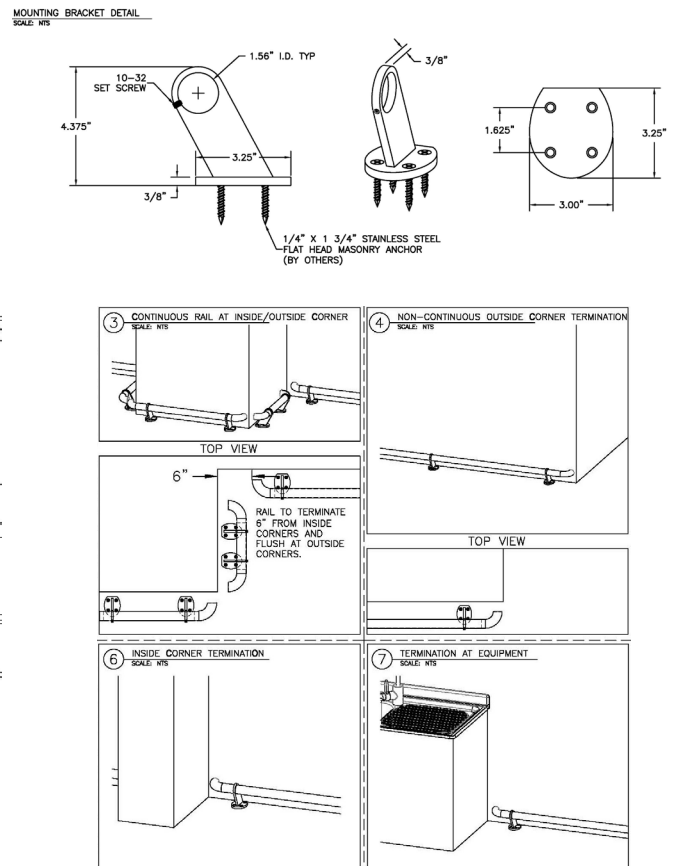


Sani-Lever™ General Description:

Sani-Lever™ is generally a 1.5" O.D., 18 gauge wall thickness Stainless Steel Tube. 316L Stainless is preferred and is finished with a #4 Polish. Tubing is provided in 12' maximum lengths. **Sani-Lever™** is mounted with cantilevered mounting brackets anchored to either the floor or wall. The standard brackets are 7" vertically from the floor, or horizontally from the wall. Brackets have a 1.56" I.D. opening to accommodate the 1.5" O.D. Tube. The bracket also includes a set screw to insure the tube rail is completely secured within the opening. Brackets are attached with 1/4" x 1-3/4" Stainless Steel Flat Head Masonry Anchors. **Sani-Lever™** bracket spacing should not exceed 32" apart.

Both **Sani-Tube™** and **Sani-Lever™** have finished ends that terminate 6" from inside corners and are flush with outside corners.

Sani-Tube™ Sample Details



Life Science Products have been in demand by these and other highly respected institutions:

Bristol Meyer Squib | Children's Mercy | Cleveland Clinic | CalTech Univ. | Dana Farber | Duke University
Emory University | F.D.A. | Harvard University | M.D. Anderson | NIH | Novartis | Northwestern University
Ohio State U. | Pfizer | Princeton University | Regeneron | University of North Carolina | Yale University