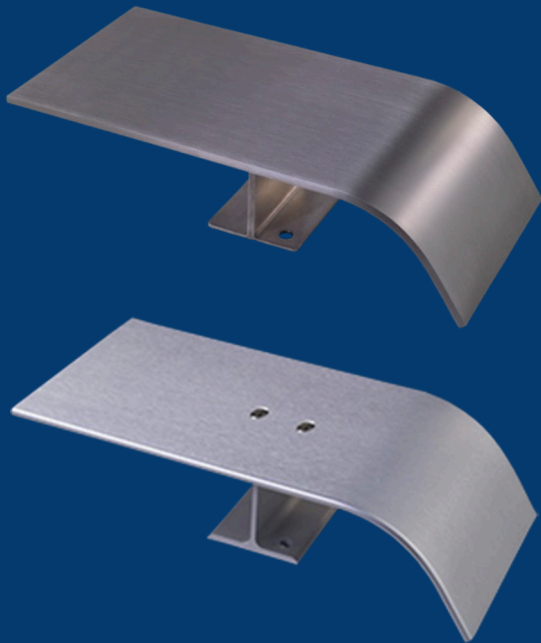




Sani-Rail®

Aluminum and Stainless Steel "Crash Rail" Wall Protection



Life Science Products

124 Speer Road, Chestertown, MD 21620
www.lspinc.com | 800-638-9874 | info@lspinc.com

© 2023 Life Science Products, Inc.

Custom Fabricated "Continuous Run" Sani-Rail®

*For Over 30 Years
Proven to Be The
"Best Practice"
"Basis of Design"
Wall Protection
for Bio-Medical and Pharma,
Research Facilities*



Sani-Rail® Key Features:

- "Continuous Run" Manufacturing means the most Hygienic, Easy to Clean and Aesthetically Attractive rail installation available.
- Custom Fabricated to handle every Wall Detail with the best possible outcome.
- Integrated Inside and Outside Corners Eliminate Dirt and Bacteria Collection Areas.
- No Field Cuts means a much Quicker and more Accurate Installation.
- Available in either 6061-T6 Anodized Aluminum or 304 & 316L Stainless Steel
- 1.5" to 8" Wall Offsets (+Custom)
- Two Bracket Styles & Optional Sleeves
- "No Through Rail Penetrations" available
- Manufactured in the U.S.A.

Sani-Rail® General Description:

LSP has offered and installed Sani-Rail® for over 30 Years. It has been installed in all 50 states and remains the most specified of all our products. Architects, Owners, General Contractors and Facility Directors are all familiar with the benefits of Custom Fabricated, "Continuous Run" Sani-Rail®. Continuous run eliminates virtually every "connection point" inherent with standard length rails. Connection joints are hard to clean, provide an ideal environment for bacterial growth, and are more likely to fail when impacted. Continuous run Sani-Rail® is not only the best practice for strength and cleanliness, but also provides a smooth and uninterrupted, aesthetically pleasing look to hallways and individual rooms. Sani-Rail® is available in either 6061-T6 Clear Anodized Aluminum, or both 304 and 316L Stainless Steel with a #4 Polish. Standard rail sizes are ¼" x 2", 3", 4" and 6" heights. Custom heights and widths are also available. Wall offsets are maintained with a variety of bracket styles and lengths. Standard Bracket lengths are 1.5", 3" 4", 6" and 8". Custom bracket lengths can also be fabricated. Stainless steel sleeves are offered to cover both I-beam and "Z" style brackets. Sani-Rail® is available with "no through penetrations" by use of a welded mounting stud. No through penetrations means an even cleaner look down the face of the rail.

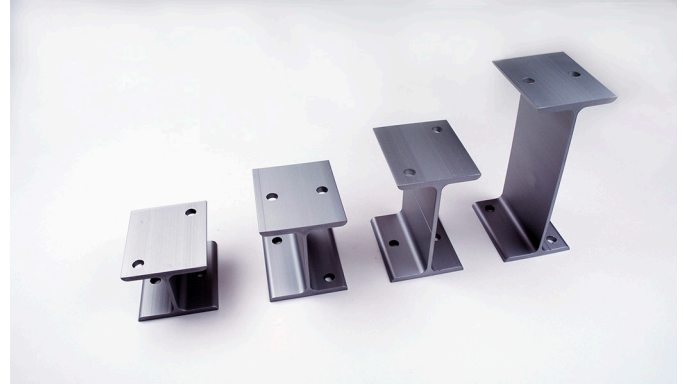
Measuring and Installation:

The custom manufacturing aspect of Sani-Rail® means final measurements are critical. LSP recommends all field measurements be taken after door frames and all wall fixtures are installed. Once measurements are finalized, the custom manufactured pieces will be numbered to match the locations on an LSP provided "Lay-Out" drawing. Contractors find installation time is drastically reduced, with far less chance of errors, when compared to field cutting and splicing "standard length" rail. LSP offers full sets of both Measuring and Installation Instructions. Contact your LSP representative or Customer Service for copies.

Details and Recommendations:

For mounting purposes, an 8" Wide 16 Gauge Sheet Metal Strapping is recommended between the studs and the wall material, at the height the rail is to be mounted. Brackets can then be secured using #16 x 1-1/2" Phillips Pan Head Type "A" self tapping screws. Mounting brackets should not exceed 48" apart.

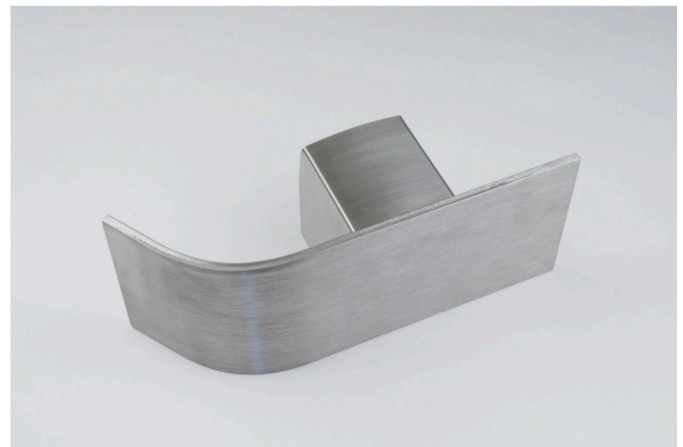
Sani-Rail® Mounting Brackets and Sleeve



I-Beam Style - 1.5", 3", 5" and 8" Pictured Above



"Z" Bracket with Welded Stud Pictured Above



Bracket Sleeve Pictured Above

Life Science Products have been in demand by these and other highly respected institutions:

Bristol Meyer Squib | Children's Mercy | Cleveland Clinic | CalTech Univ. | Dana Farber | Duke University
Emory University | F.D.A. | Harvard University | M.D. Anderson | NIH | Novartis | Northwestern University
Ohio State U. | Pfizer | Princeton University | Regeneron | University of North Carolina | Yale University